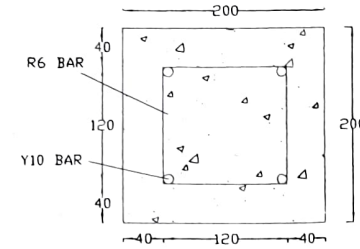
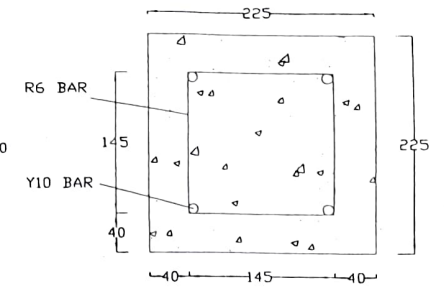


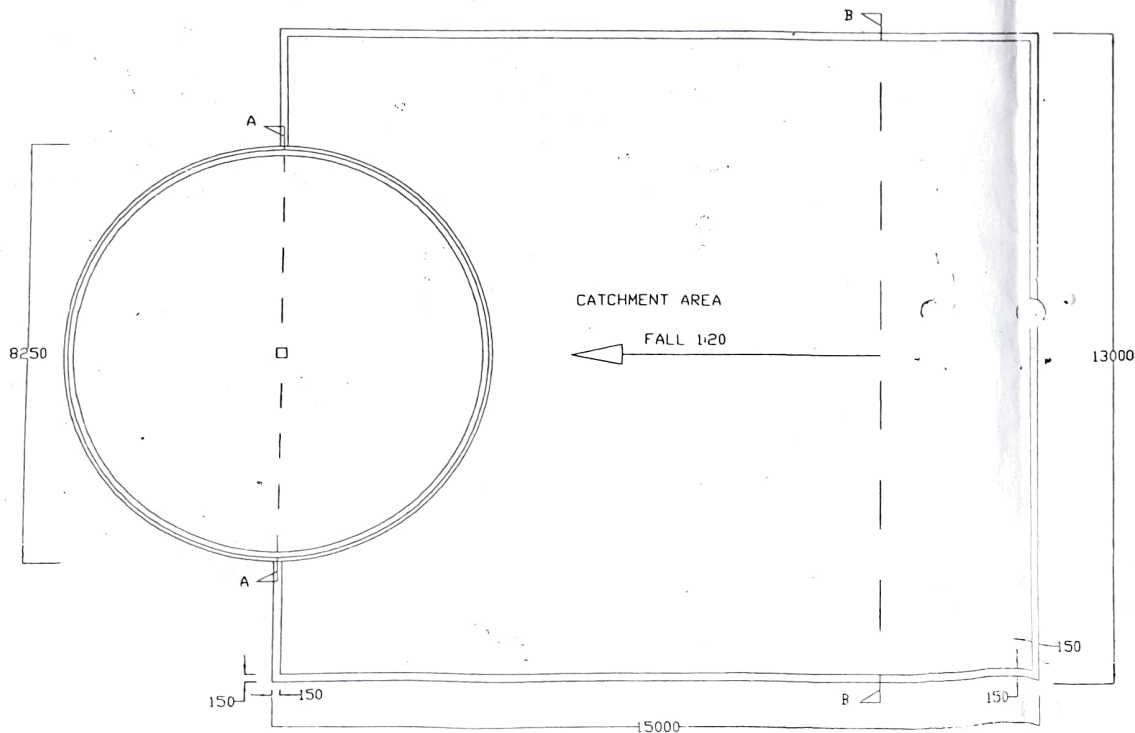
CROSS SECTION OF TANK SCALE 1:40



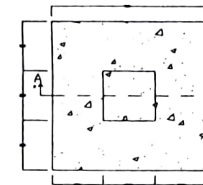
COLUMN DETAILS SCALE 1:5



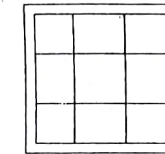
BEAM DETAIL SCALE 1:5



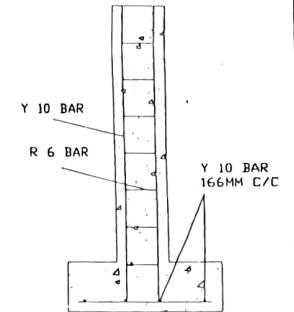
DJABIA PLAN SCALE 1:100



COLUMN AND BASE PLAN SCALE 1:20

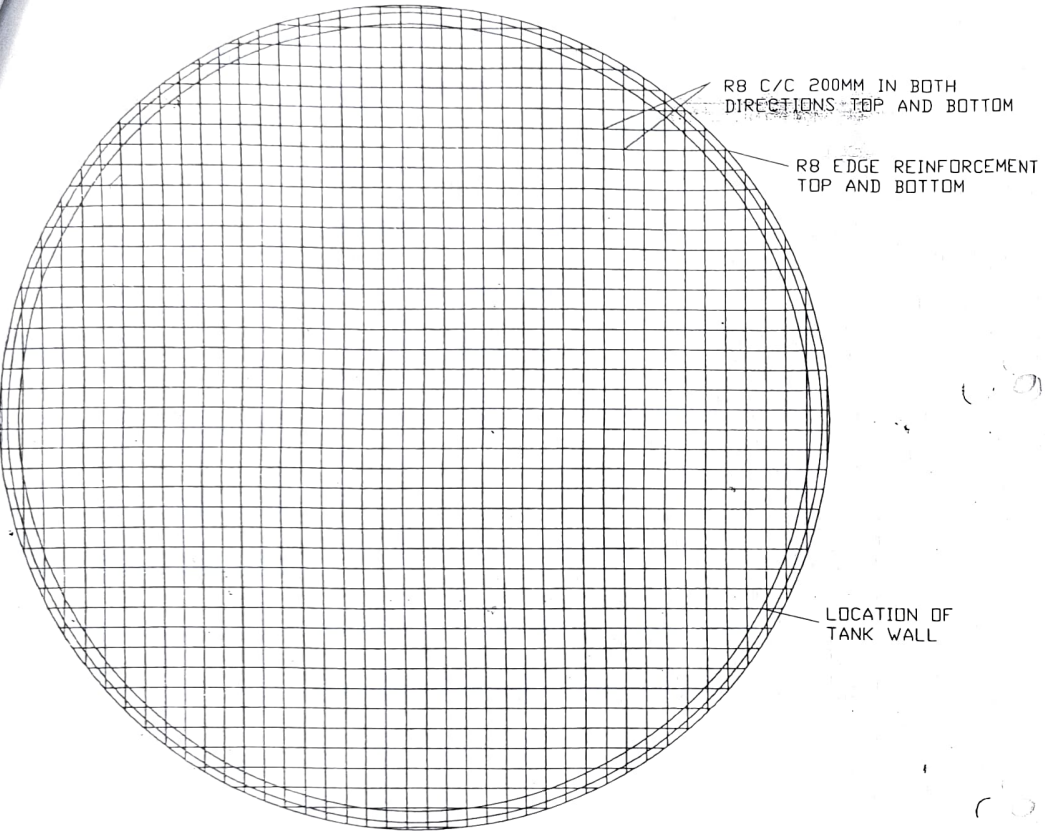


BASE REINFORCEMENT DETAIL SCALE 1:20

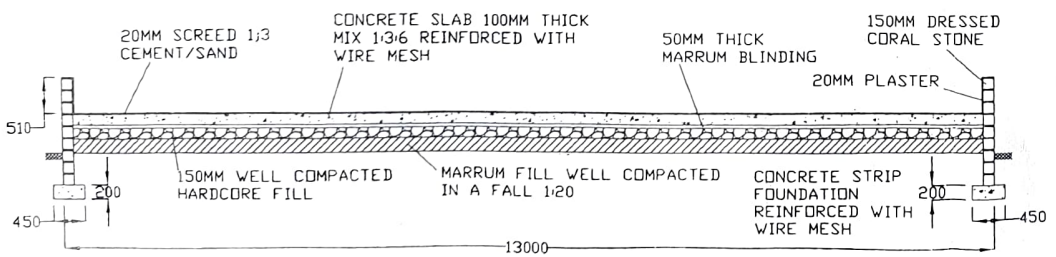


SECTION A-A SCALE 1:20

|   |                          |
|---|--------------------------|
| COAST DEVELOPMENT AUTHORITY                   |                          |
| 100m <sup>3</sup> DJABIA                      |                          |
| GENERAL LAYOUT PLAN & DETAILS<br>SHEET 1 of 2 |                          |
| SCALE: AS SHOWN                               | DATE                     |
| DRAWN BY: H.M.M                               | MARCH, 2021              |
| DESIGNED BY: S.I.T                            | MARCH, 2021              |
| CHECKED BY: H.M.M                             | MARCH, 2021              |
| DRG. No.                                      | CDA/KCCAP/WASINI/2021/01 |



PLAN OF BOTTOM SLAB SCALE 1:50

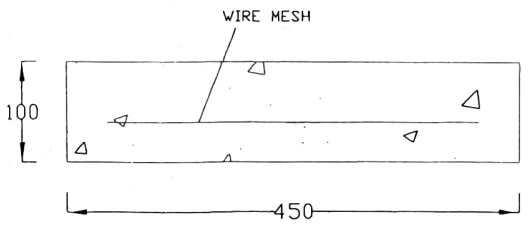


CROSS SECTION OF CATCHMENT AREA SCALE 1:70

BAR BENDING SCHEDULE

| LOCATION   | BAR DIAM. | NO. REQ. | LENGTH             |      | TOTAL LENGTH M | SHAPE OF BAR | REMARKS       |
|------------|-----------|----------|--------------------|------|----------------|--------------|---------------|
|            |           |          | A MM               | B MM |                |              |               |
| WALLS      | R8        | 62       | 1200               | -    | 744            |              | BEND IN PLACE |
|            | R8        | 31       | 2500               | -    | 77.5           |              | BEND IN PLACE |
| FLOOR SLAB | R8        | 160      | VARIES CUT ON SITE |      | 1180 INCL LAPS |              |               |
|            | R8        | 2        | 1200               | -    | 24             |              | BEND IN PLACE |
|            | R8        | 1        | 2500               | -    | 2.5            |              | BEND IN PLACE |

NOTE:  
 ALL DIMENSIONS ARE IN MM.  
 REINFORCED CONCRETE TO BE 1:2:4 MIX BY VOLUME  
 WATER / CEMENT COVER OVER REINFORCEMENT MIN. 40 MM.  
 FLOOR AND ROOF SLABS TO BE CAST IN CONTINUOUS OPERATIONS.  
 SURFACE OF THE CONCRETE MUST BE KEPT MOIST FOR 8 DAYS.  
 SHUTTERING FOR THE ROOF SLAB TO BE ADJUSTED SO THAT AT THE CENTRE IT IS 30 MM. ABOVE TOP LEVEL OF THE TANK WALL.  
 SUPPORTS TO REMAIN IN PLACE FOR 28 DAYS AFTER CONCRETE HAS BEEN CAST.



DETAIL OF CONCRETE STRIP FOUNDATION SCALE 1:5

|                                     |                          |
|-------------------------------------|--------------------------|
| COAST DEVELOPMENT AUTHORITY         |                          |
| 100m³ DJABIA                        |                          |
| GENERAL LAYOUT PLAN & REINFORCEMENT |                          |
| SHEET 2 of 2                        |                          |
| SCALE: AS SHOWN                     | DATE                     |
| DRAWN BY: H.M.M                     | MARCH, 2021              |
| DESIGNED BY: S.I.T                  | MARCH, 2021              |
| CHECKED BY: H.M.M                   | MARCH, 2021              |
| DRG No.                             | CDA/KCCAP/WASINI/2021/01 |